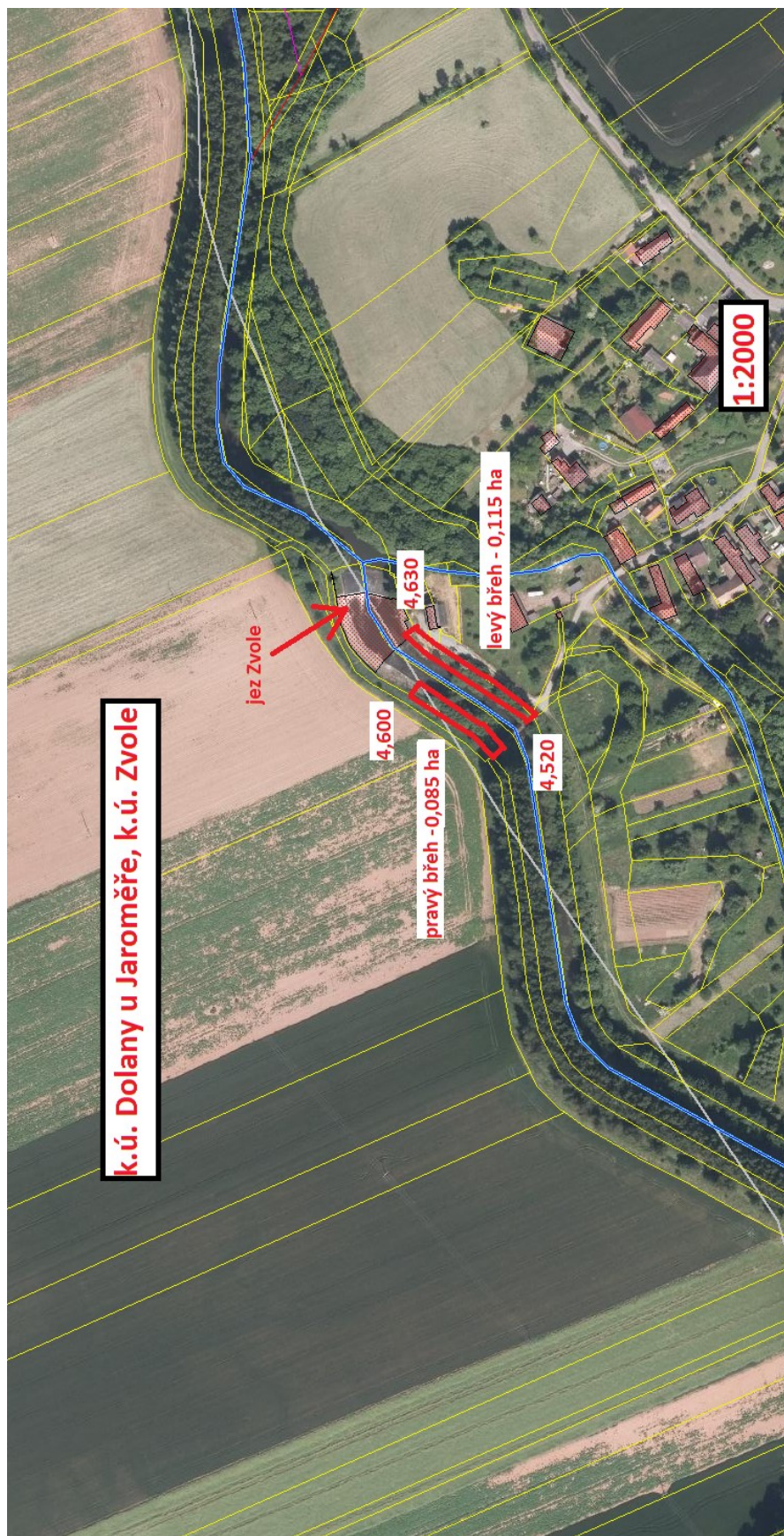
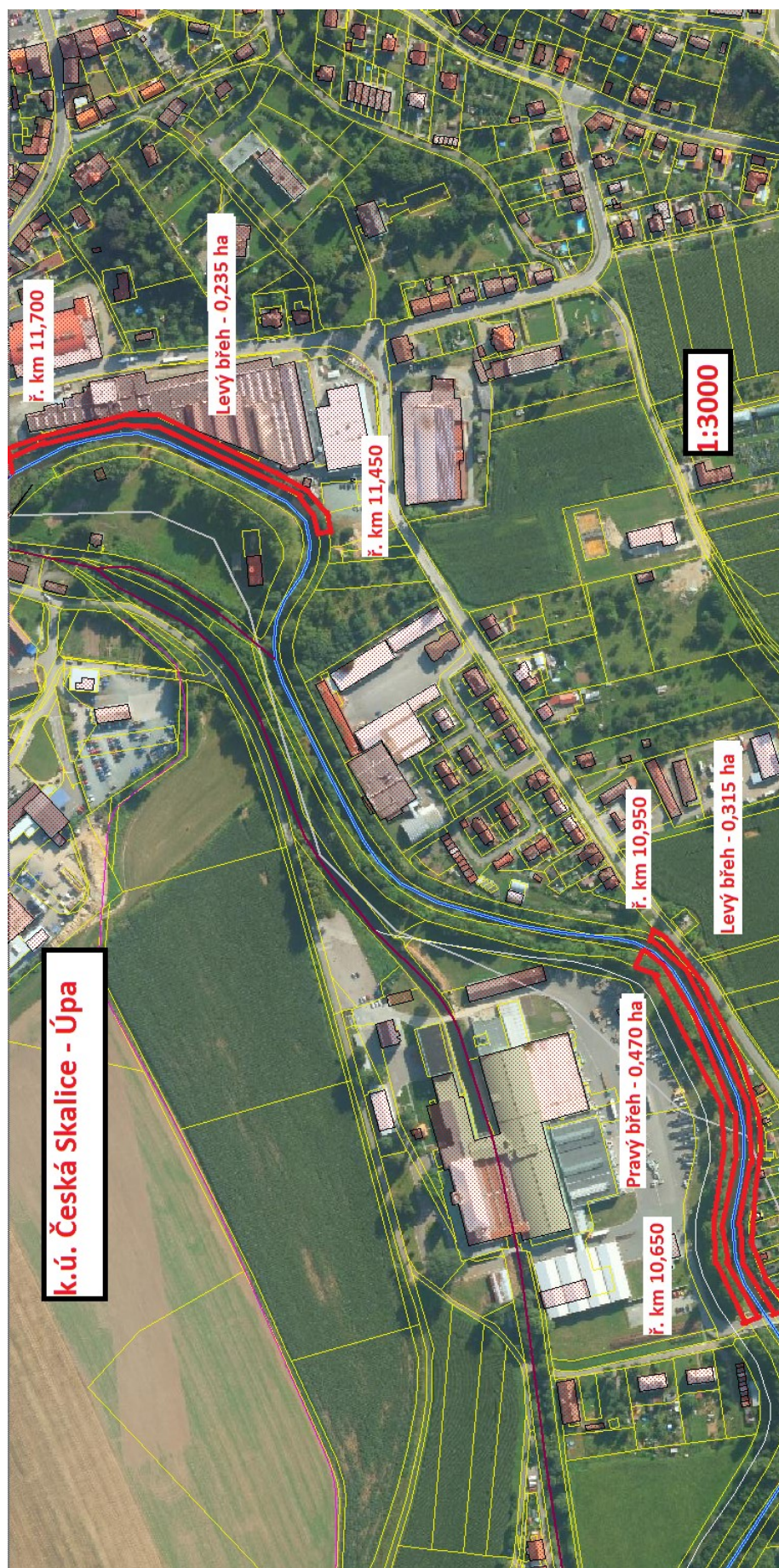


Mapový podklad – Dvůr Králové nad Labem, jih
Sečení probíhá v korytě vodního toku

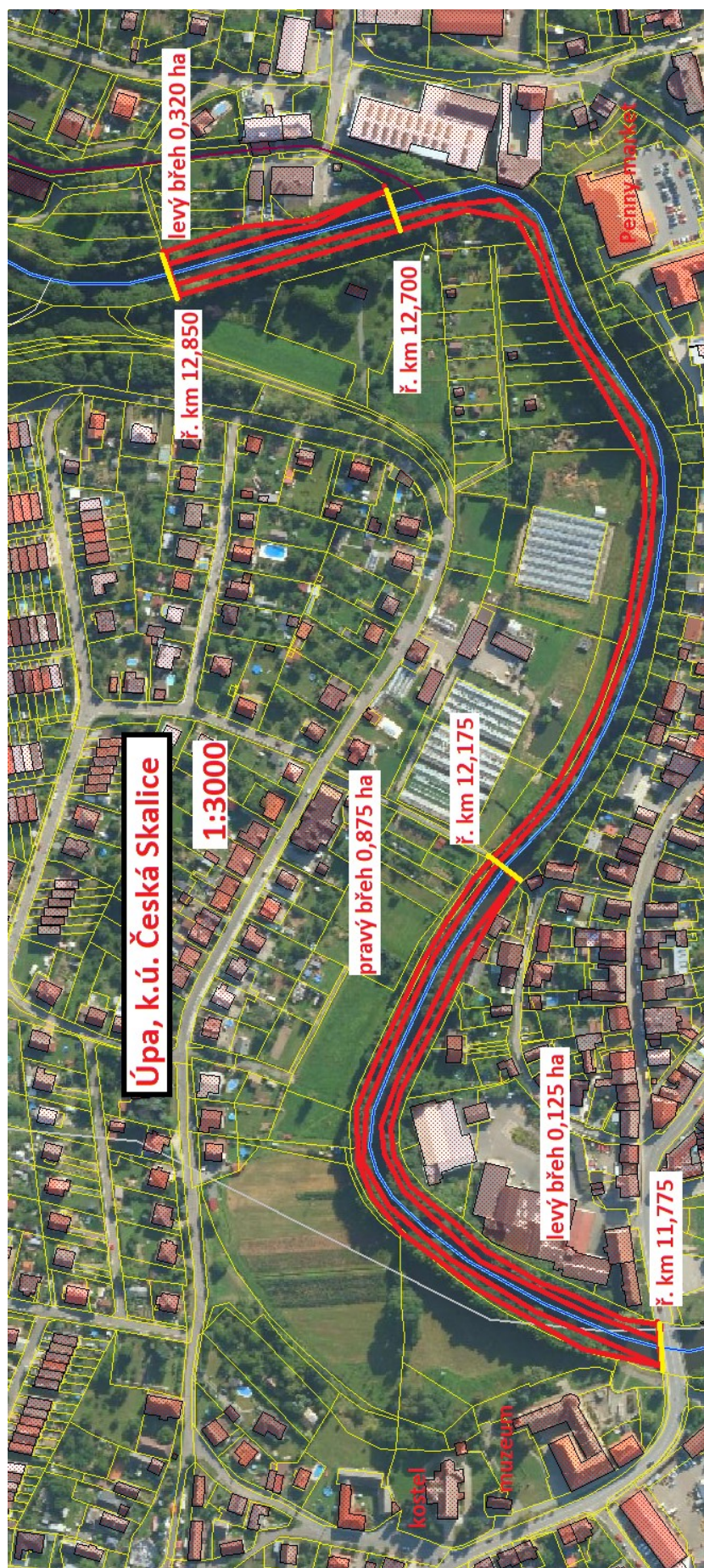
- Lokalita 1. Úpa, Zvole



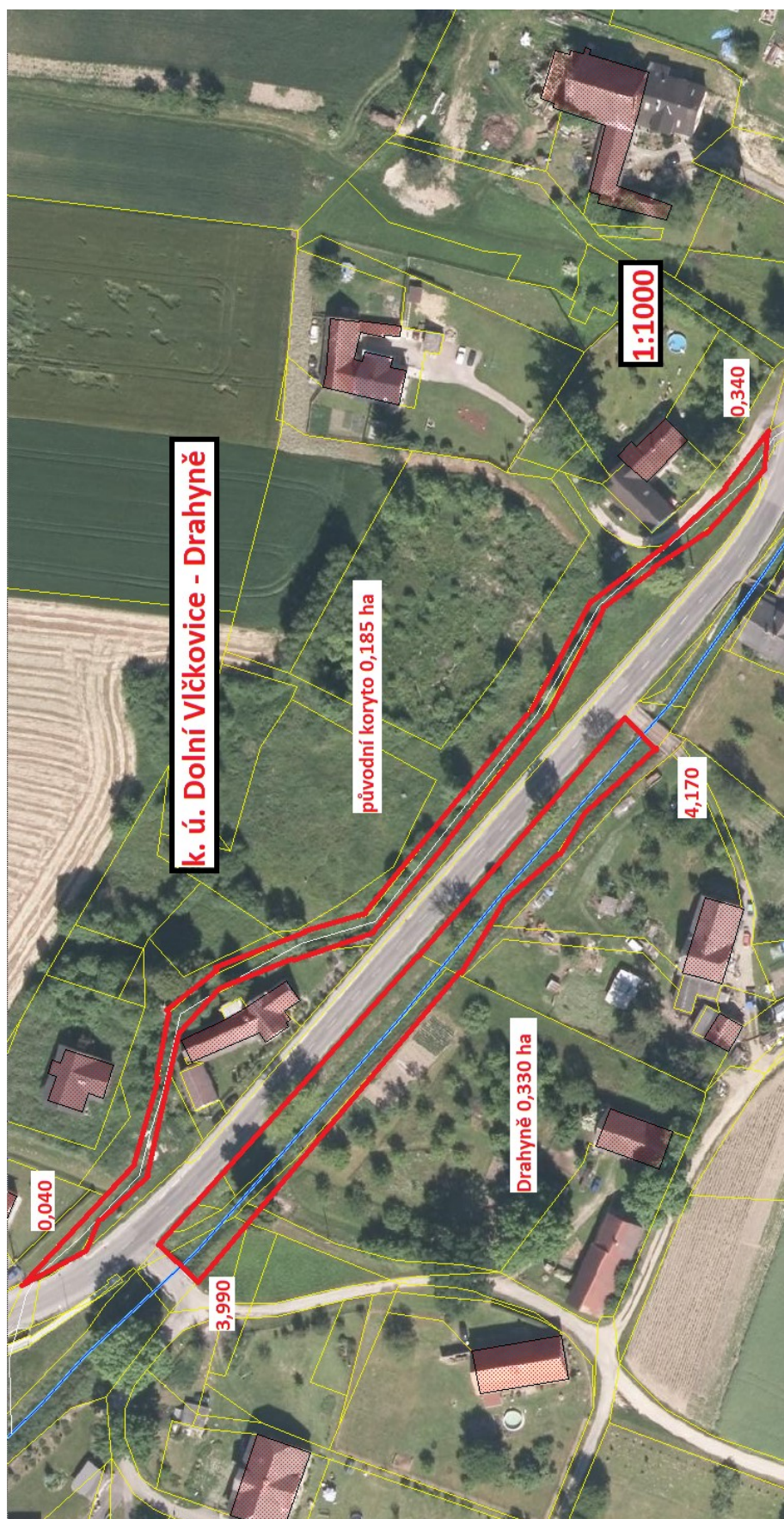
- Lokalita 2. Úpa, Česká Skalice



- Lokalita 2. Úpa, Česká Skalice



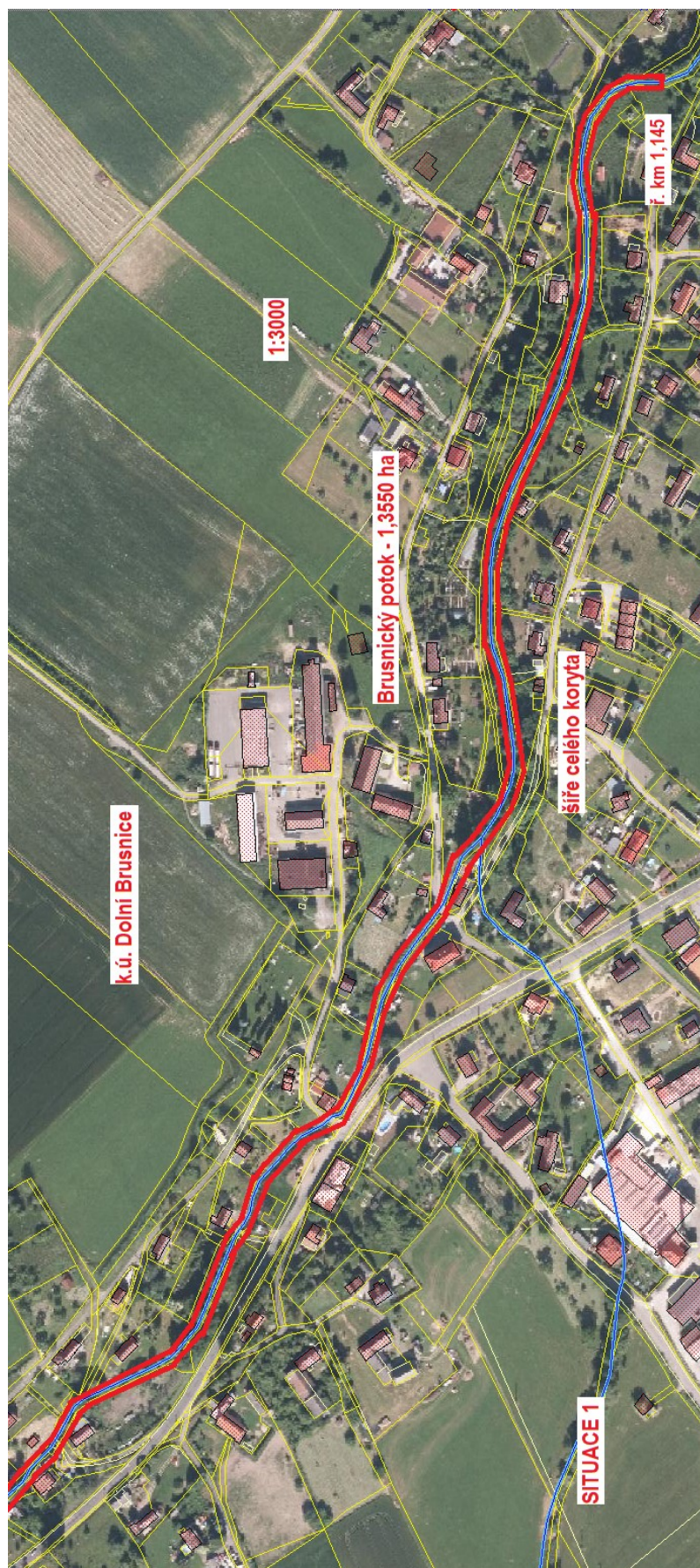
- Lokalita 3. + 4. Drahyně, k.ú. Dolní Vlčkovice



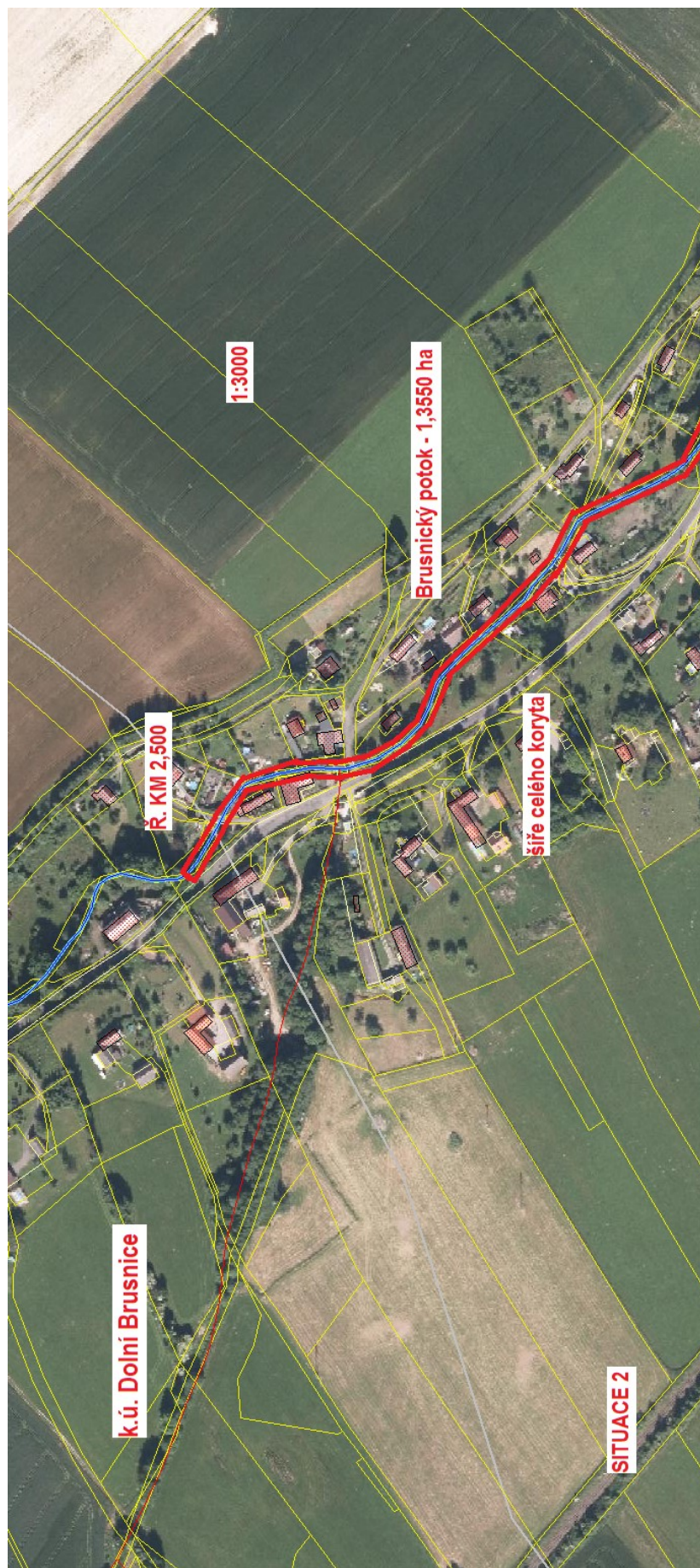
- Lokalita 5. Bezejmenný vodní tok IDVT 10166828, k.ú. Zboží u Dvora Králové



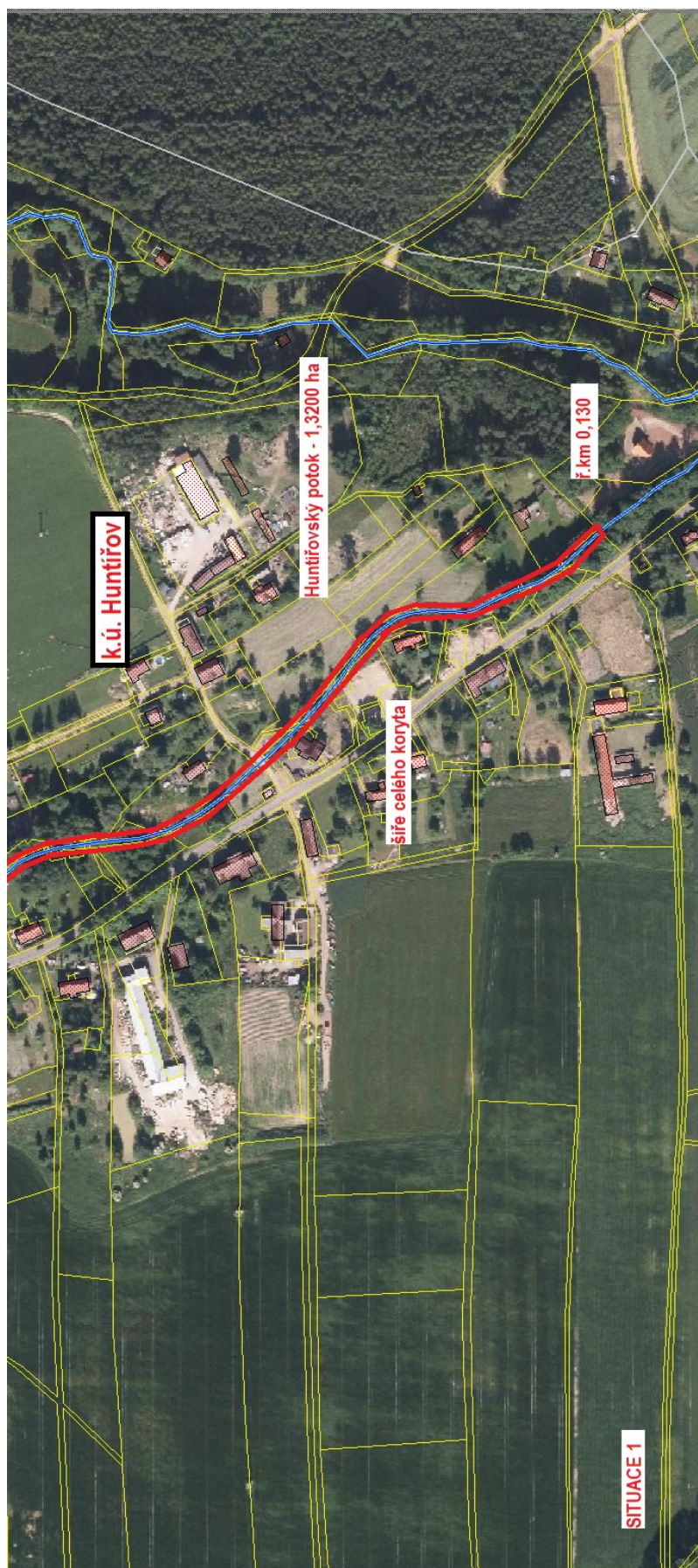
- **Lokalita 6. Brusnický potok, k.ú. Dolní Brusnice
Situace 1)**



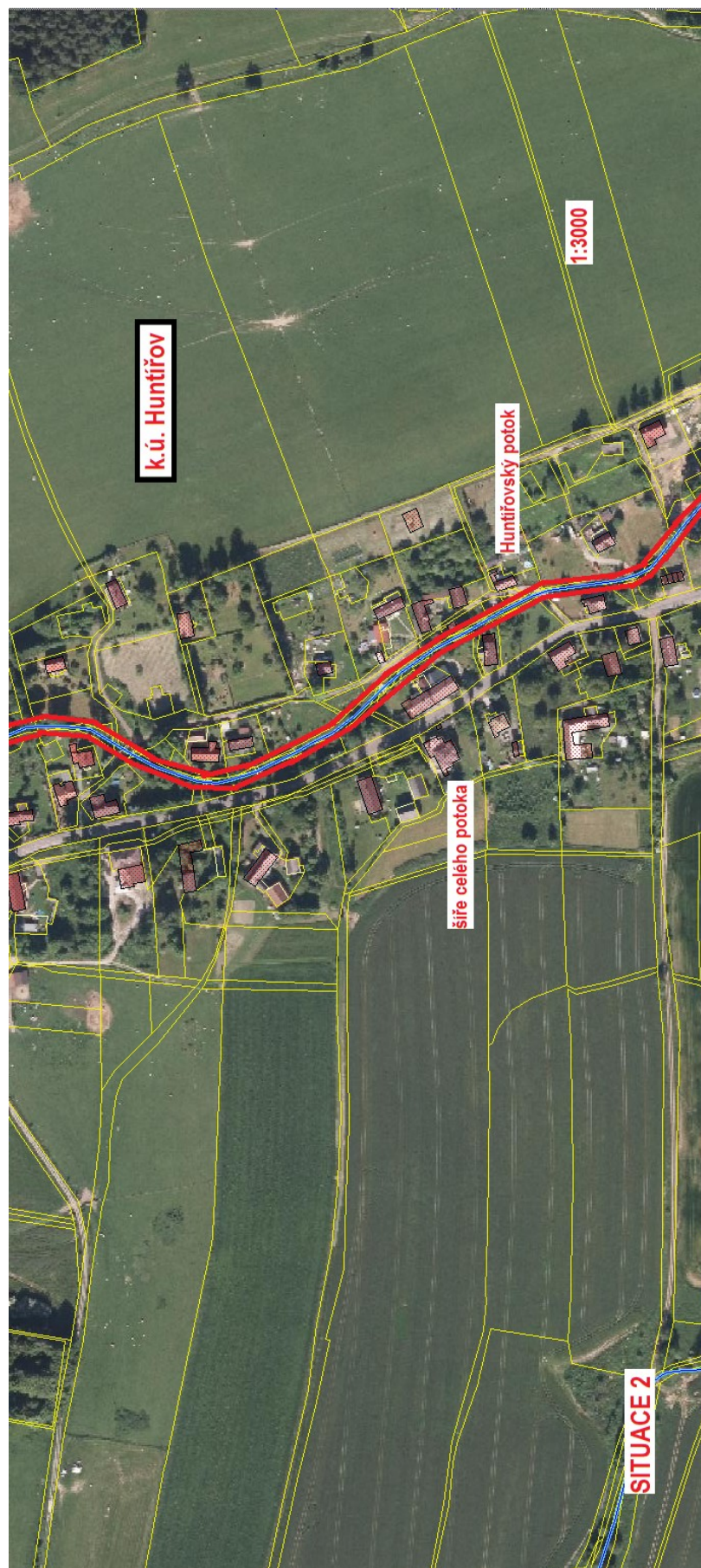
Situace 2)



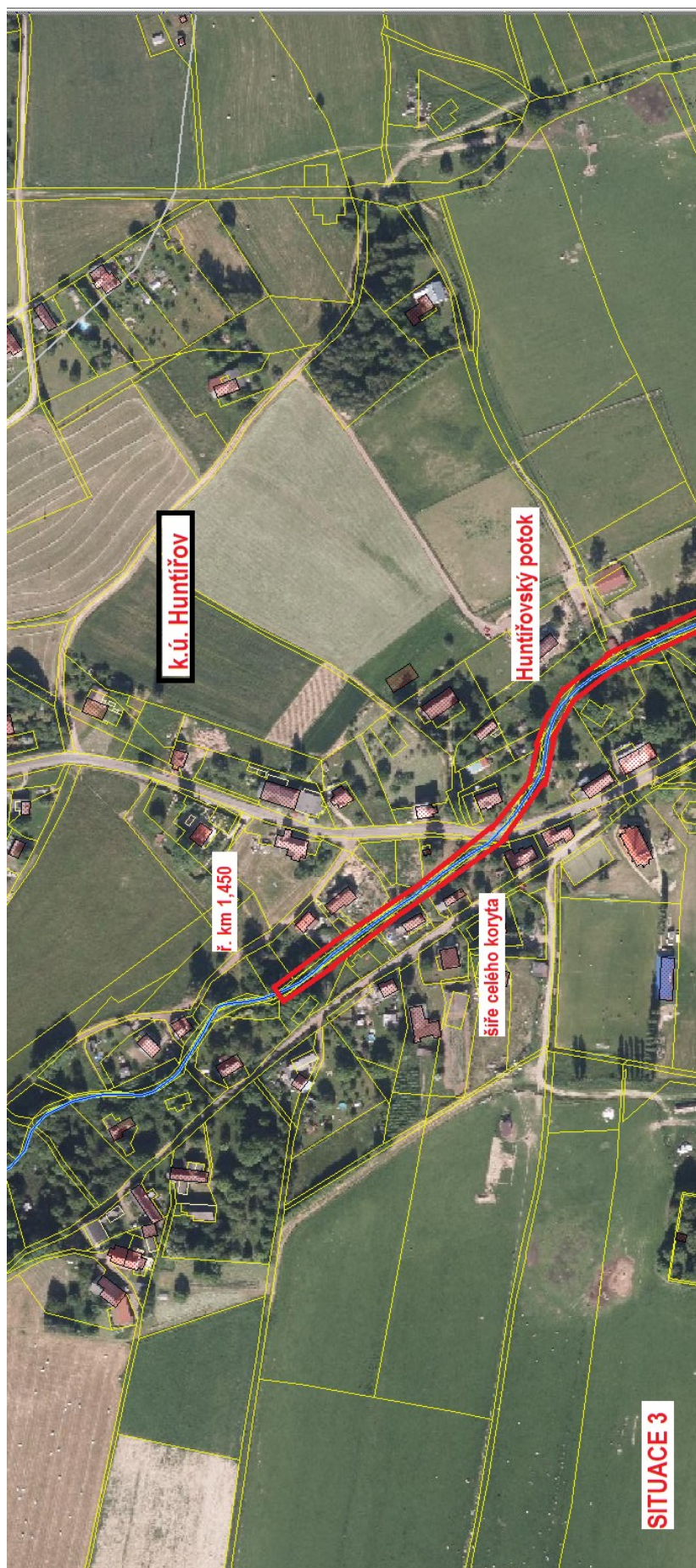
- Lokalita 7. Huntířovský potok, Huntířov
Situace 1)



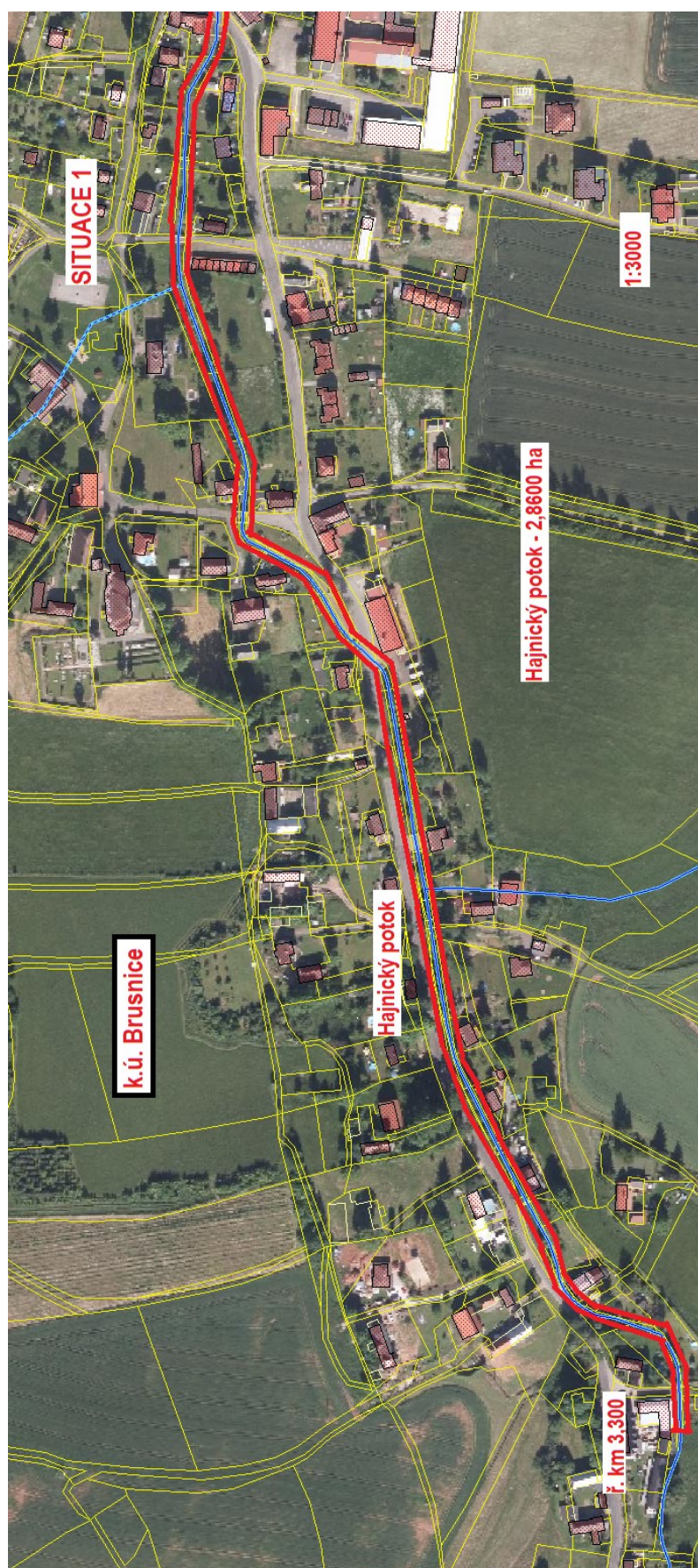
Situace 2)



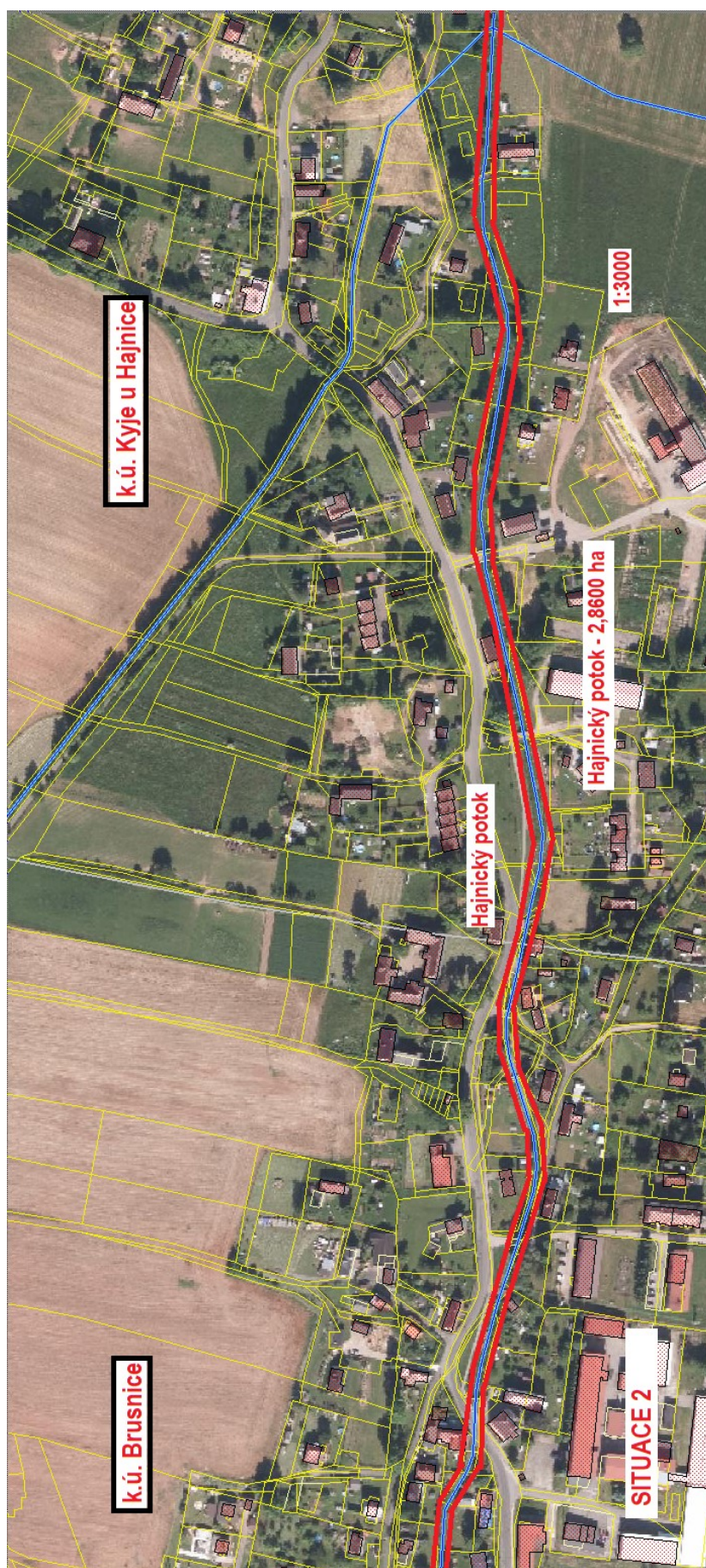
Situace 3)



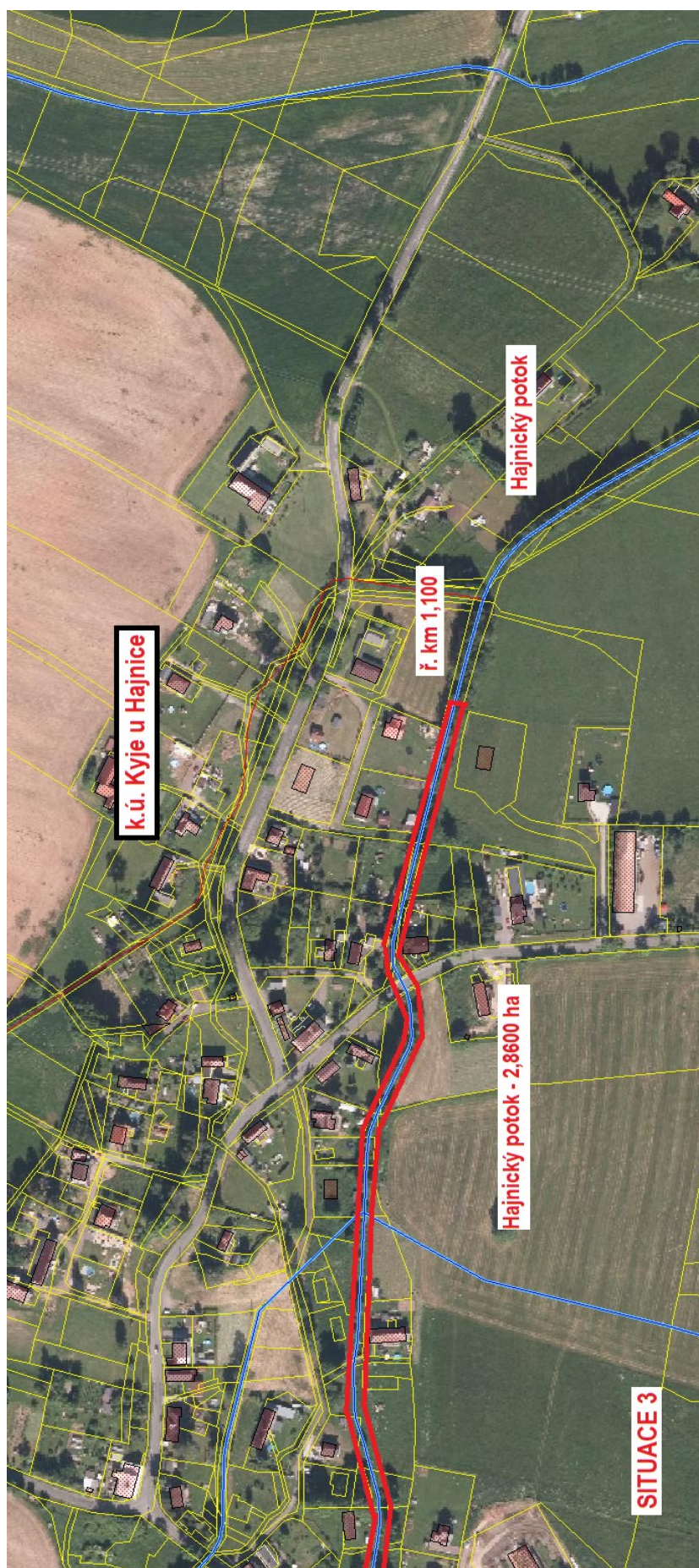
- **Lokalita 8. Hajnický potok, k.ú. Brusnice, k.ú. Kyje u Hajnice
Situace 1)**



Situace 2)



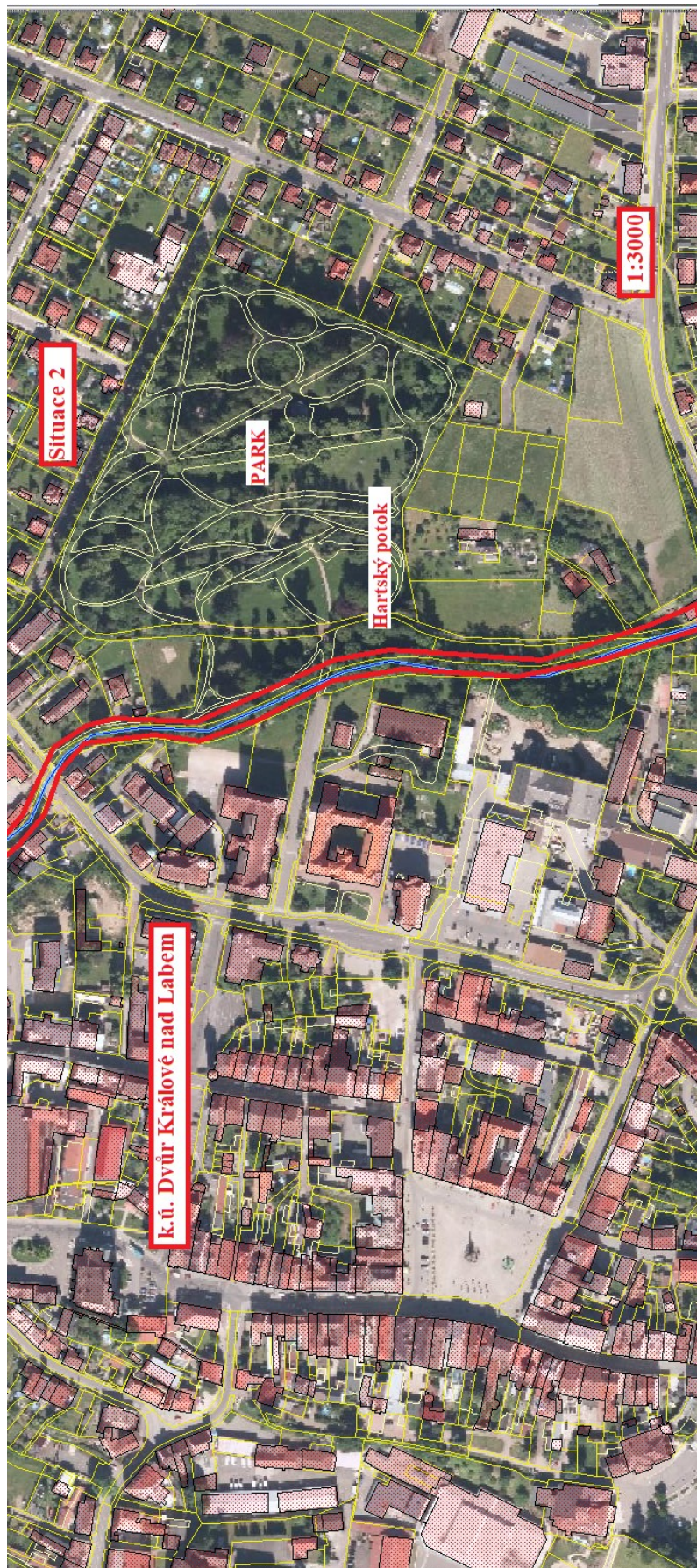
Situace 3)



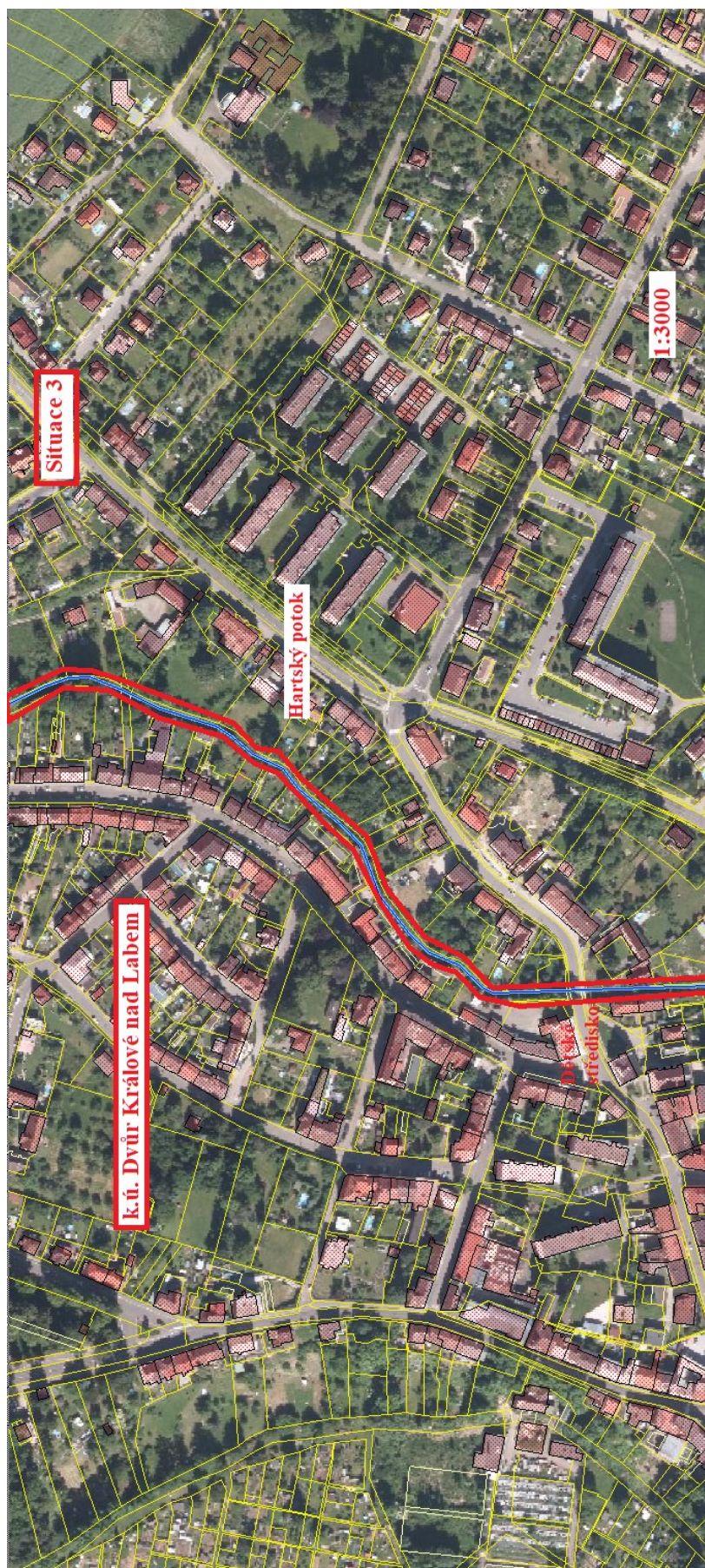
- Lokalita 9) Hartský potok, k. ú. Dvůr Králové nad Labem, celková plocha 3,122 ha
Situace 1)



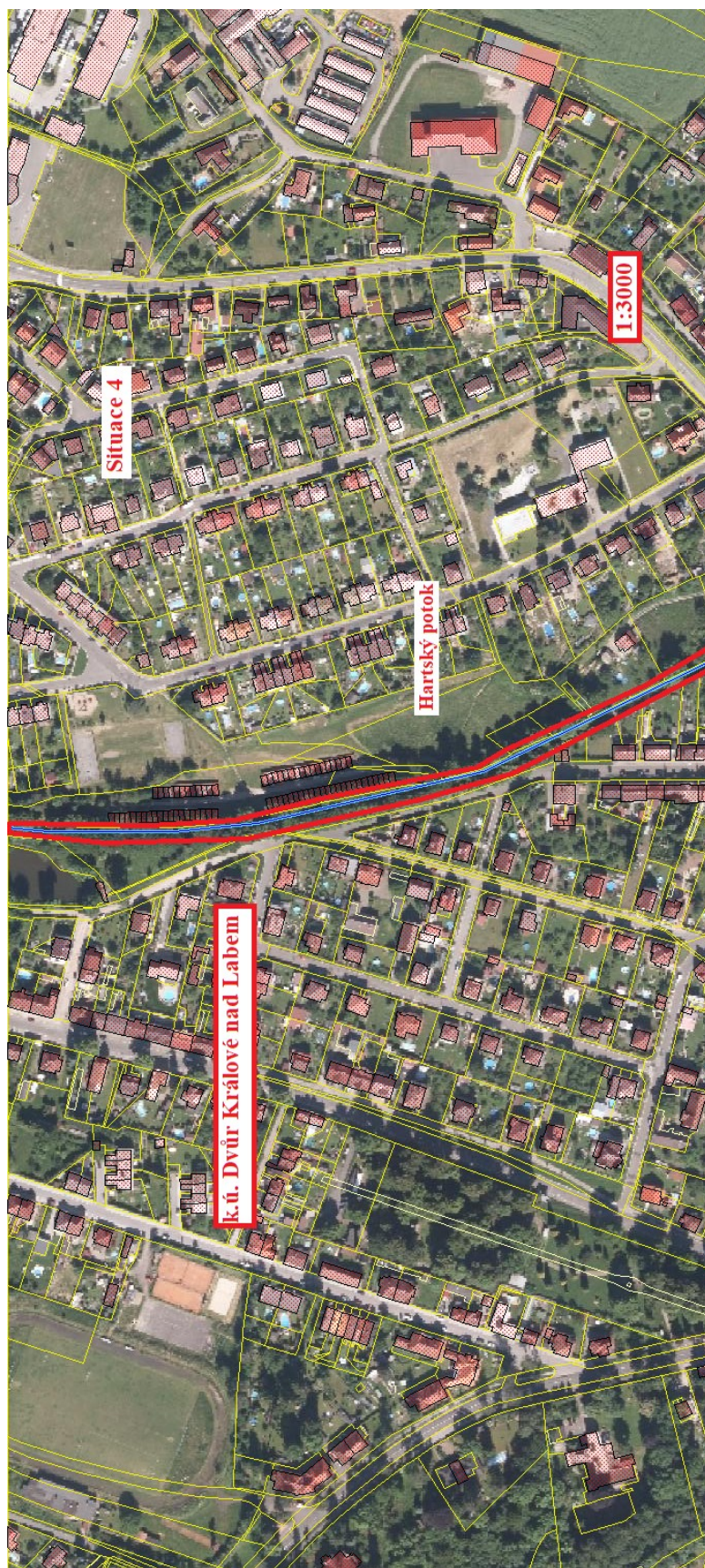
Situace 2)



Situace 3)



Situace 4)



Situace 5)

