

A

B

C

D

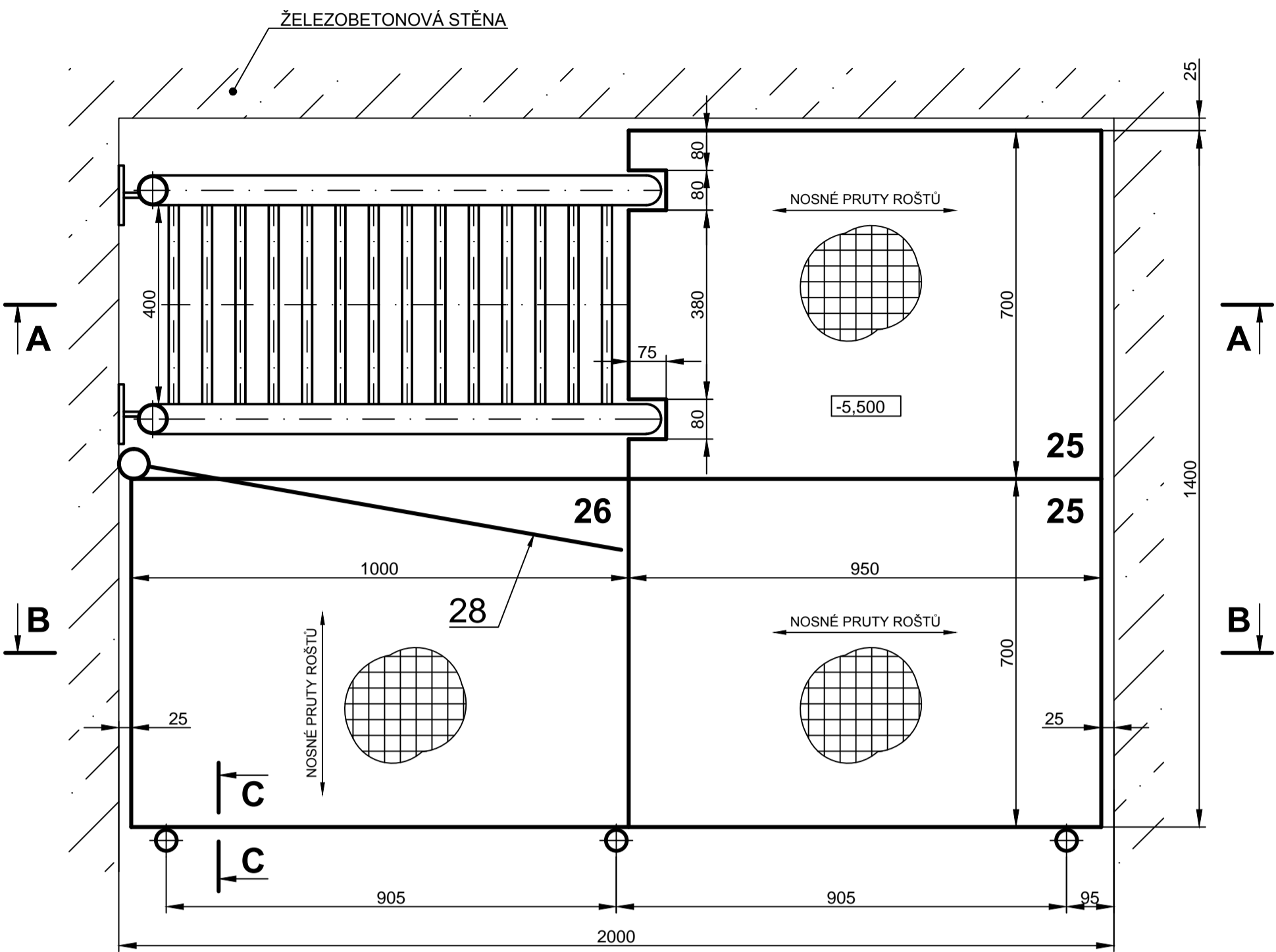
E

F

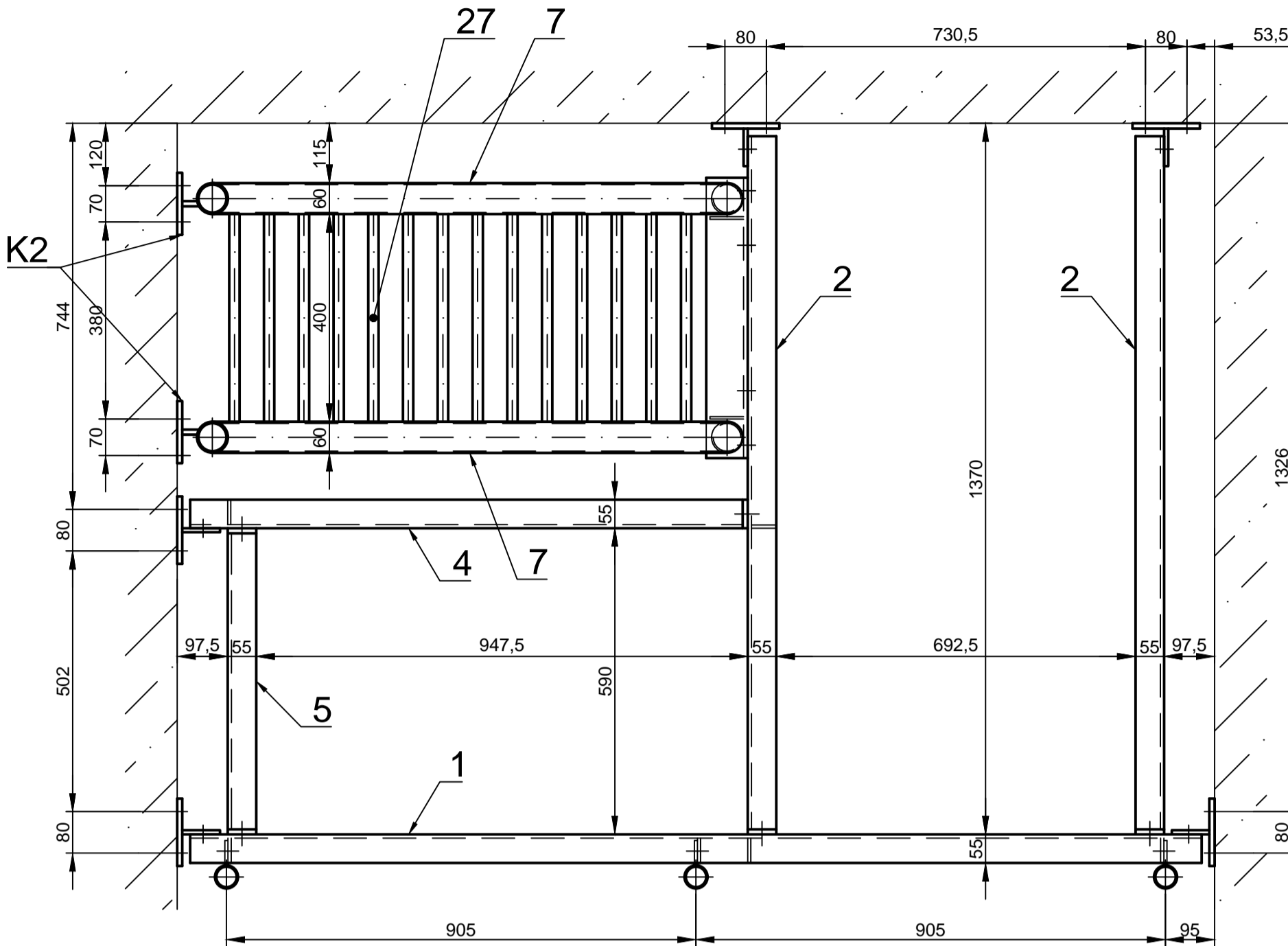
G

H

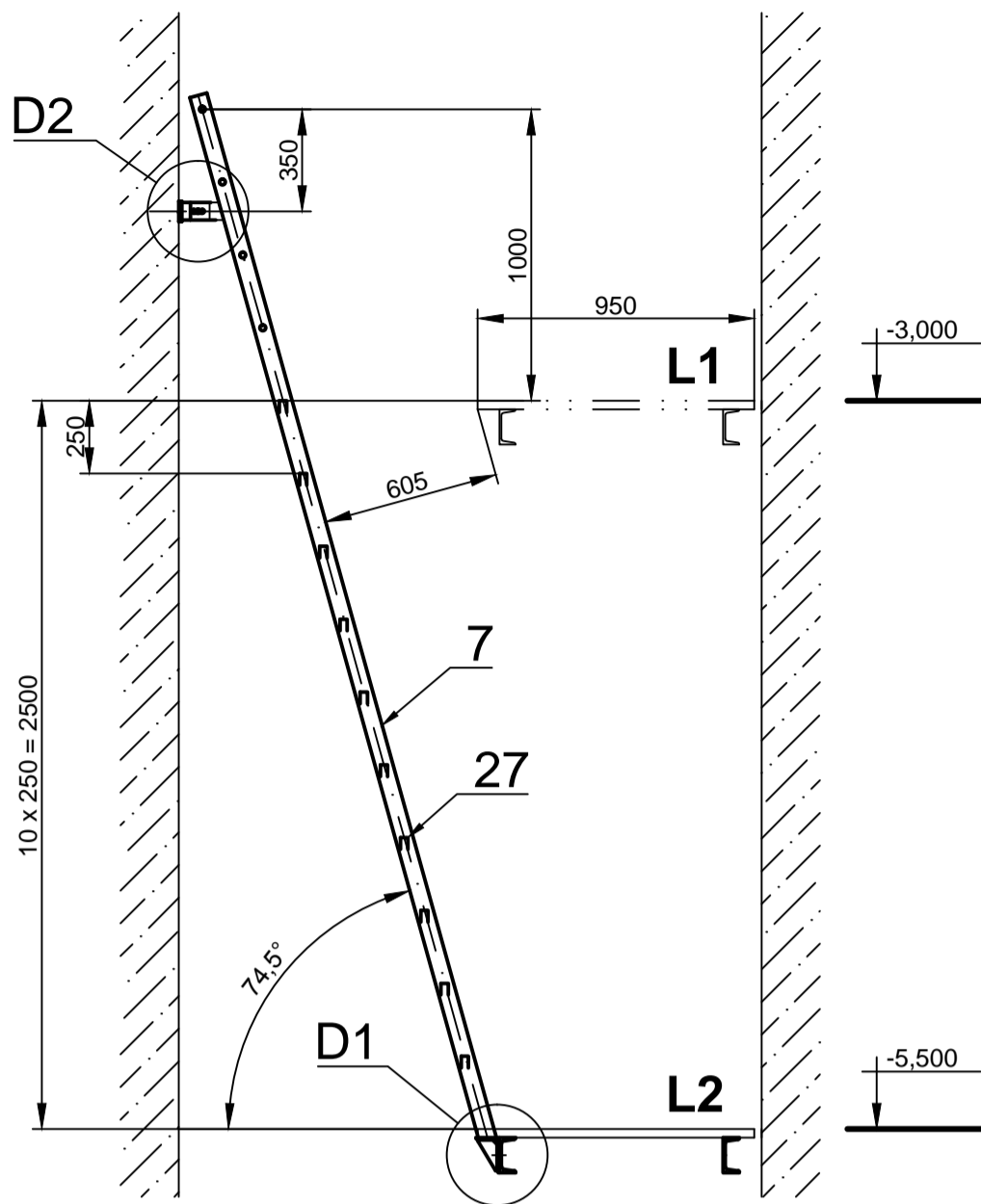
PŮDORYS



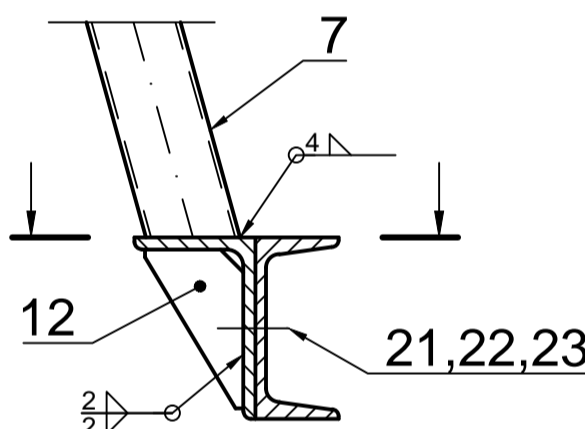
PŮDORYS BEZ ROŠTŮ



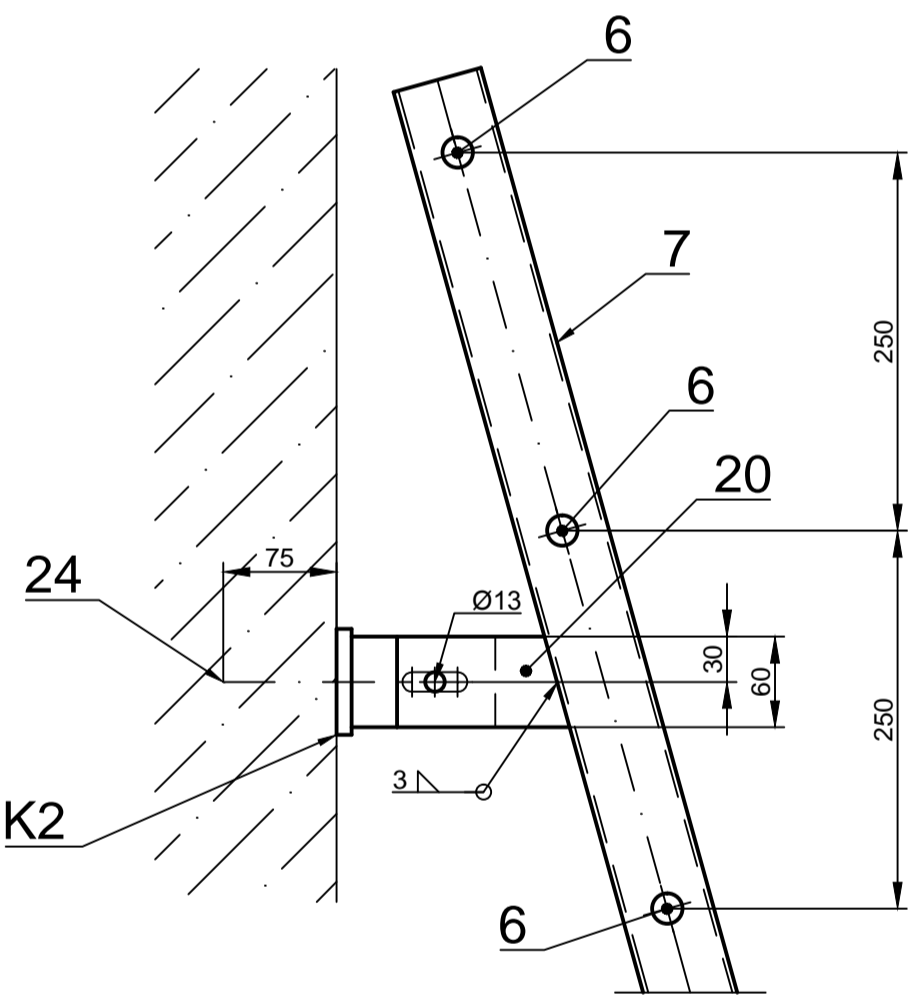
A-A (1:25)



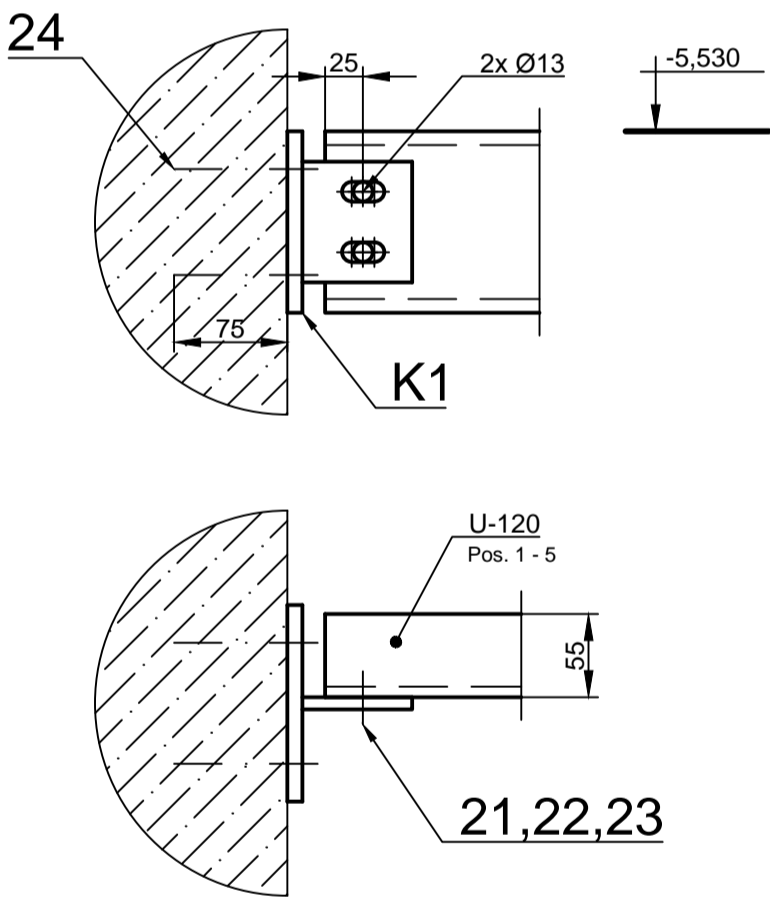
D1 (1:5)



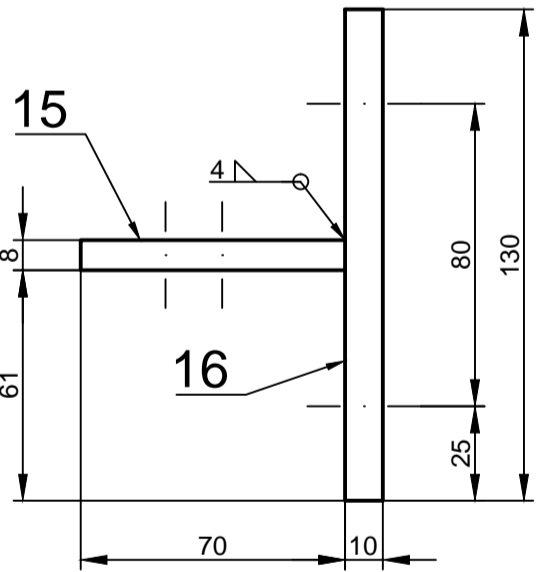
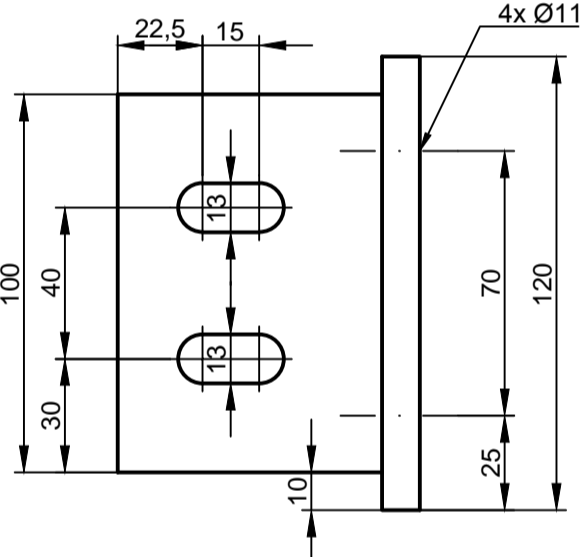
D2 (1:5)



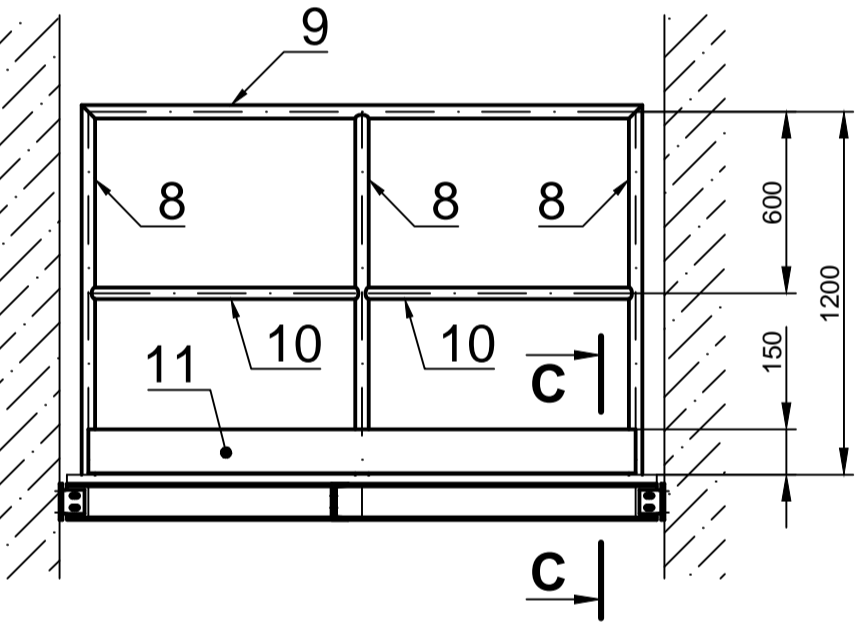
DETAIL KOTVENÍ
NOSNÍKŮ 1-5 DO STĚN
(1:5)



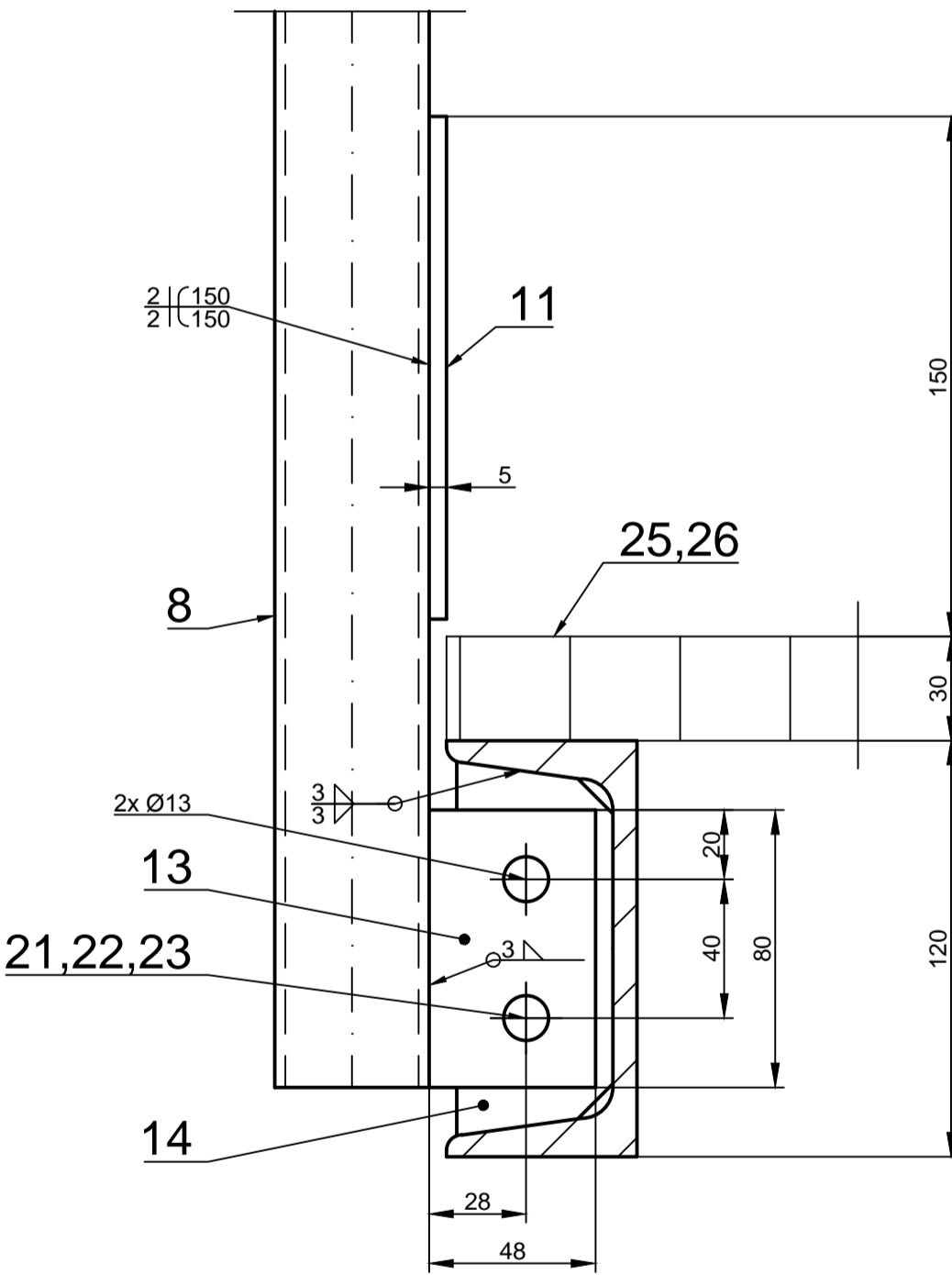
K1-5ks (1:2)



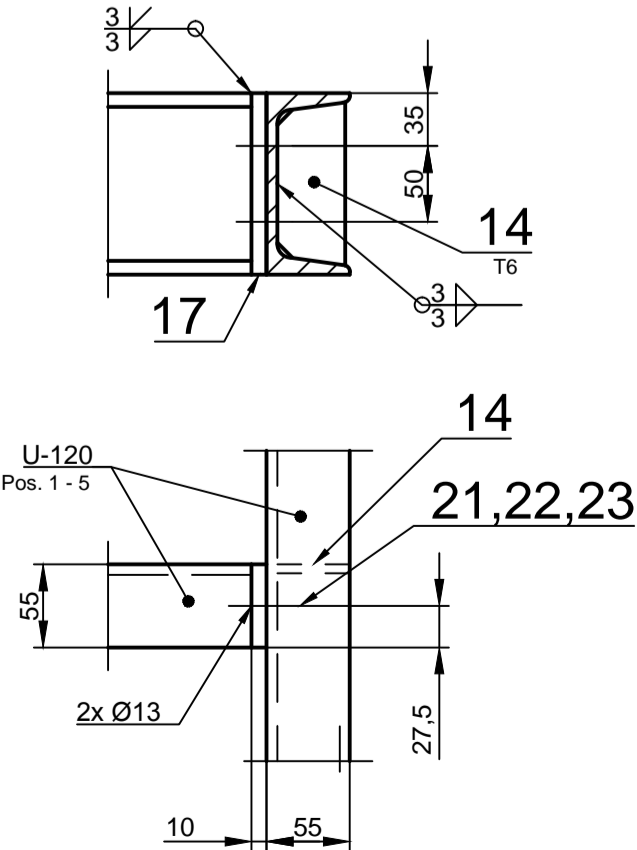
B-B (1:25)



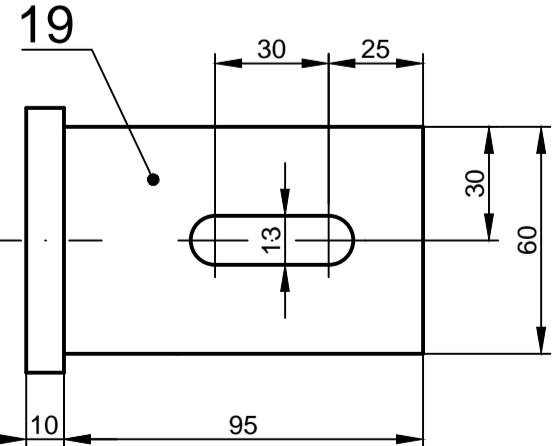
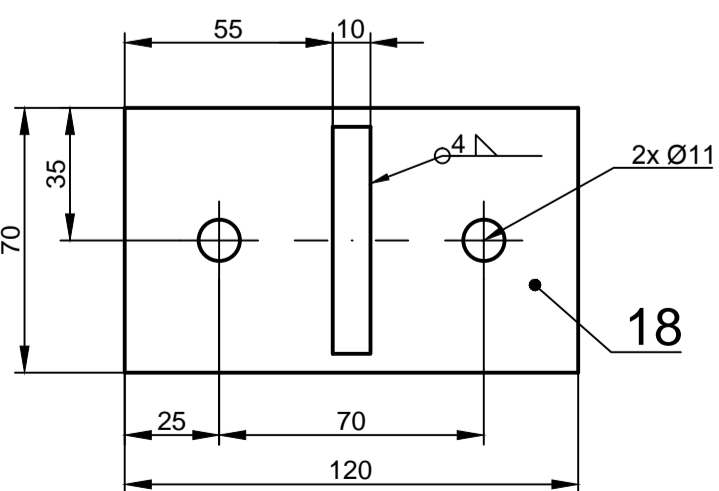
D3 (1:2)



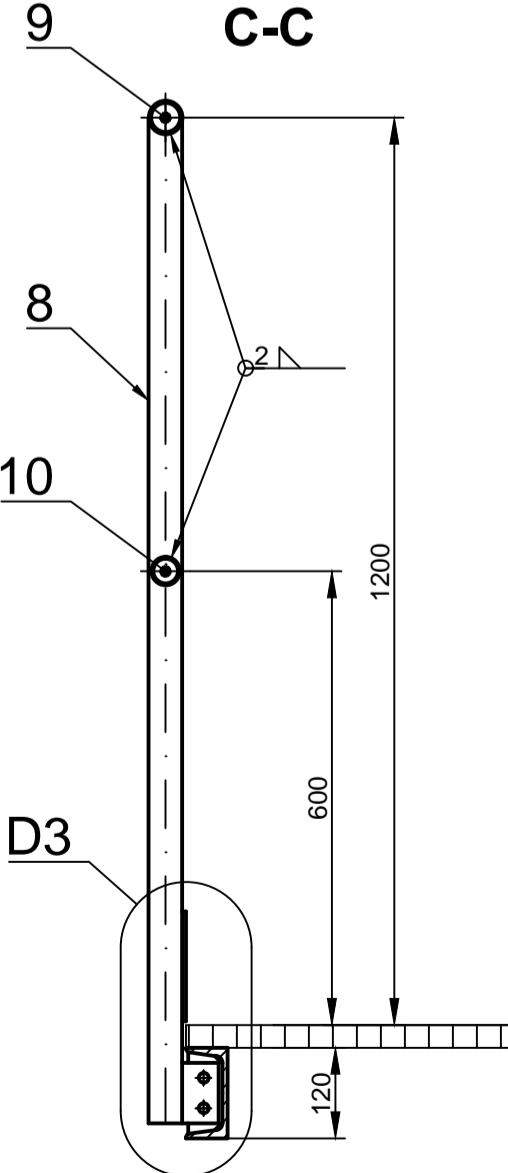
DETAIL SPOJENÍ
NOSNÍKŮ 1-5
(1:5)



K2-2ks (1:2)



C-C



HIP:		VYPRACOVAL:		Kancelář stavebního inženýrství Botanická 256, 360 02 Dolovice www.ksi.cz E-mail: info@ksi.cz	
Ing. Petr HAMPL		Ing. Martin KOPTA			
LOKALITA: Březová, Karlovy Vary		SÚ: Karlovy Vary			
INVESTOR: Povodí Ohře, státní podnik					
STAVBA:		VD Březová		FORMÁT A1	
		oprava podest návodních strojoven		DATUM 30. 11. 2017	
				OČEL TECHNICKÁ POMOC	
				Č. ZAK. 256 / 2017	
NÁZEV:		MĚŘÍTKO:		Č. VÝKRESU:	
Podesta s žebříkem L2 (–5,500 m)		1:10		090–17–002	