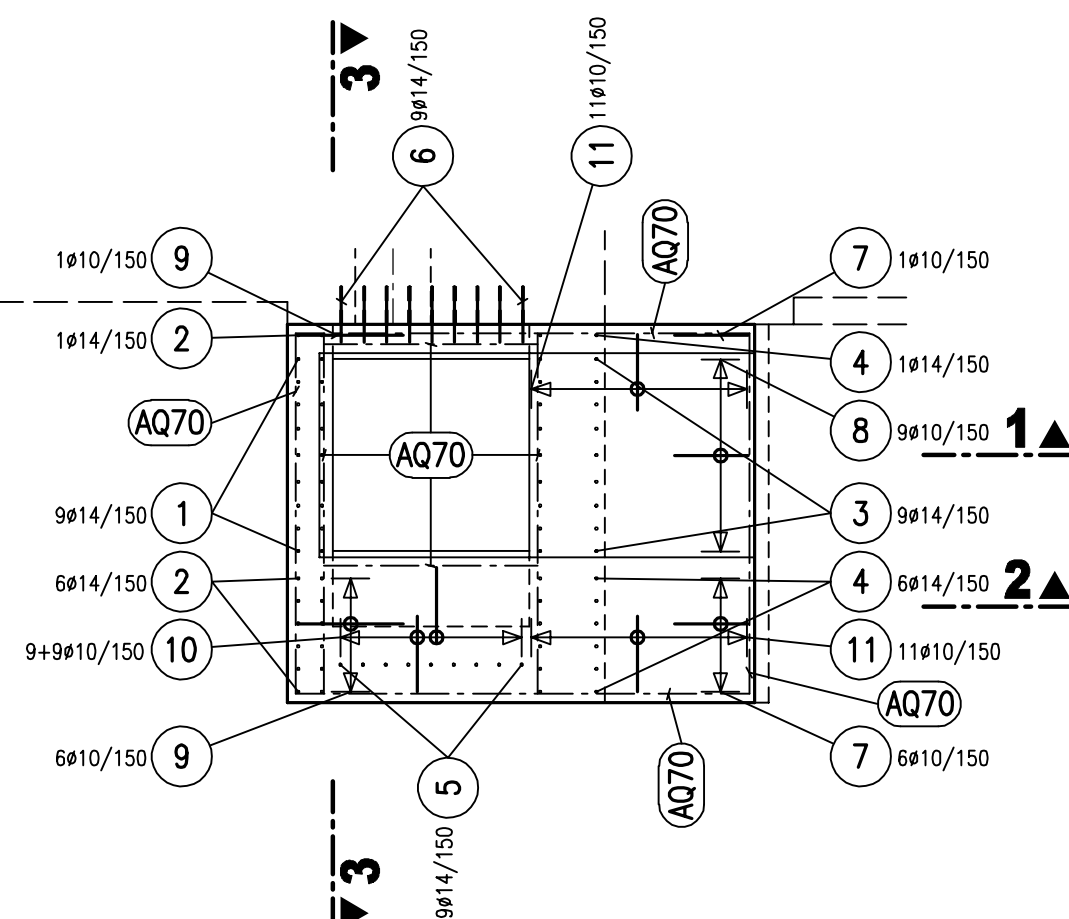
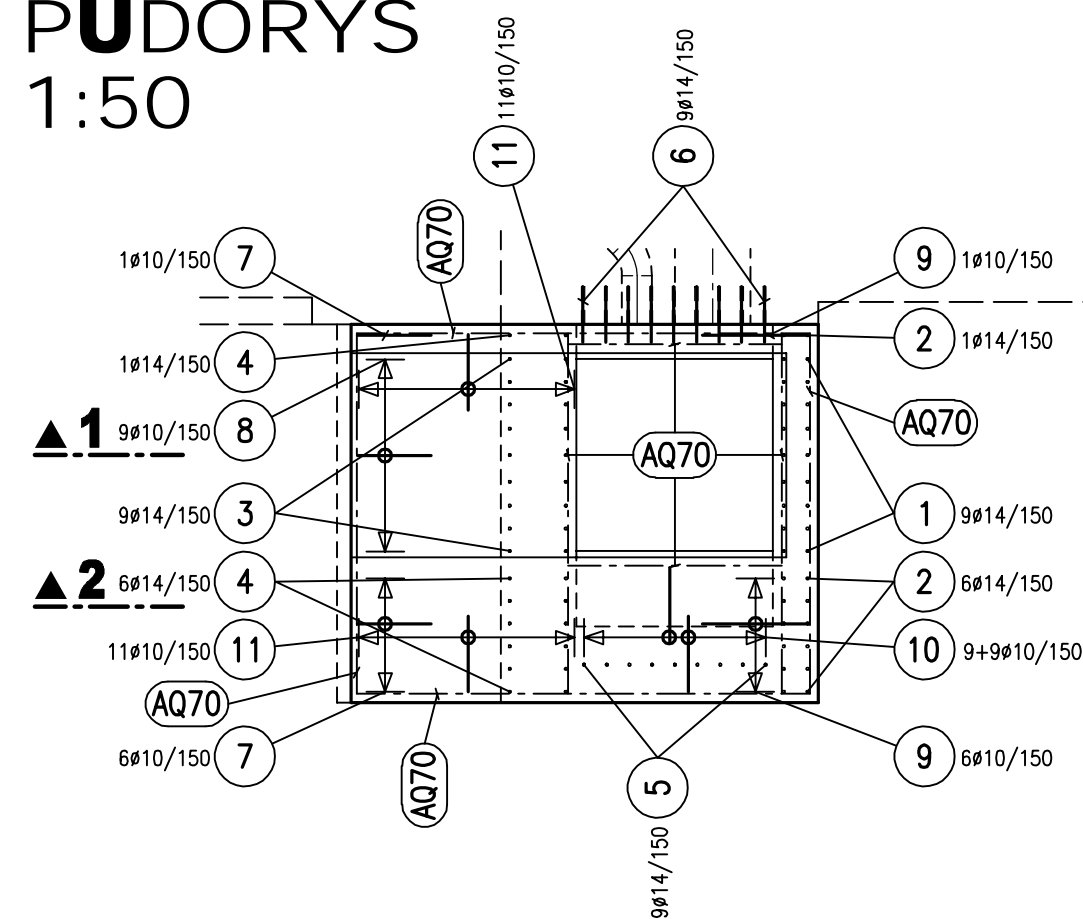


PŮDORYS  
1:50




VÝPIS VÝZTUŽE:

Ocel 10 425  
**Ø14** 1.208 kg/m  
 15.84  
 13.23  
 24.66  
 21.14  
 14.22  
 15.48  
 5.04

Ocel 10 425  
**Ø10** 0.617 kg/m  
 16.31  
 20.88  
 17.78  
 40.50  
 52.14  


---

**147.61 m**

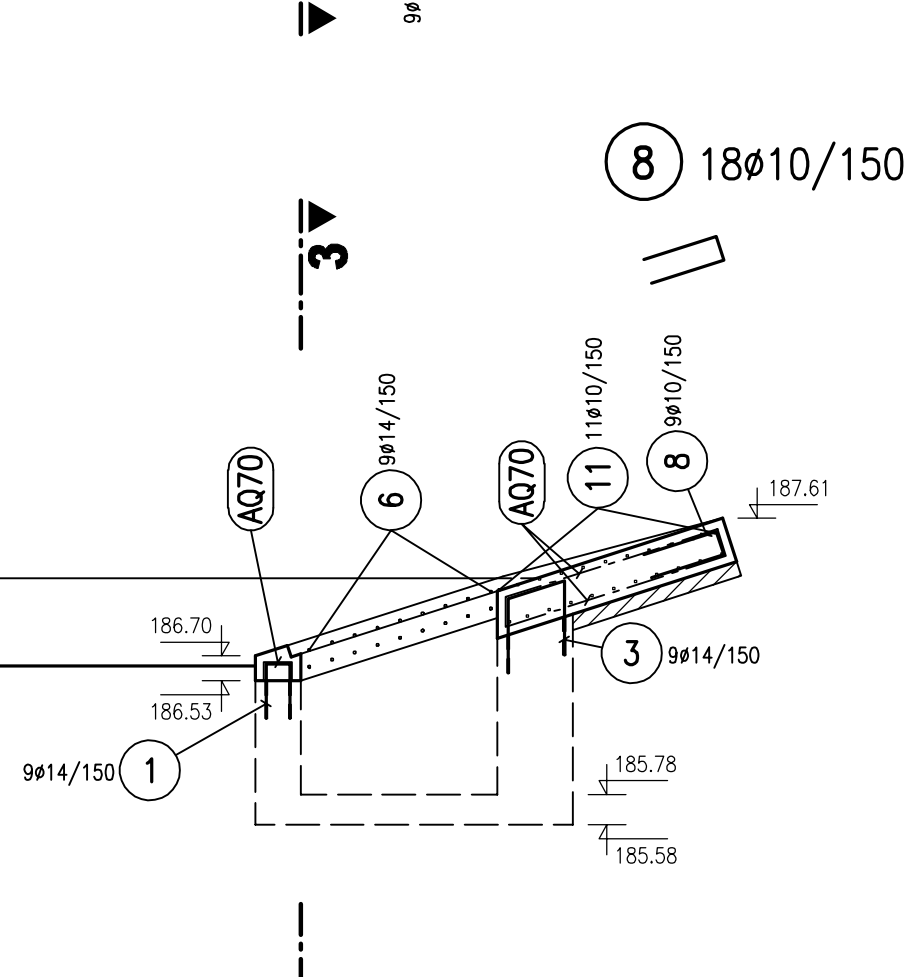
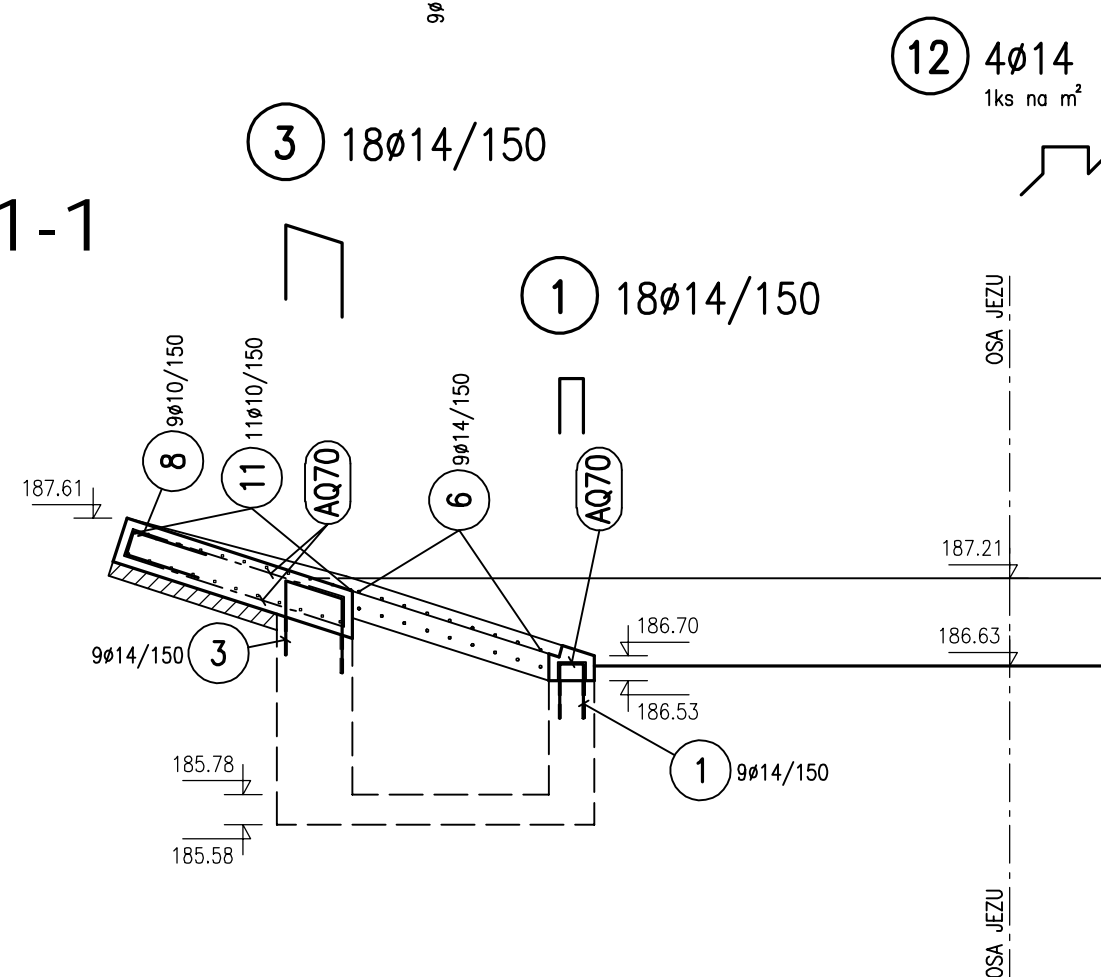
Ocel 10 425 – Sif AQ70  
 86.98 kg/ks  
 6m x 2.4m  
**2 ks**  
 Hmotnost celkem: **173.96**

Hmotnost celkem: **132.41 kg**

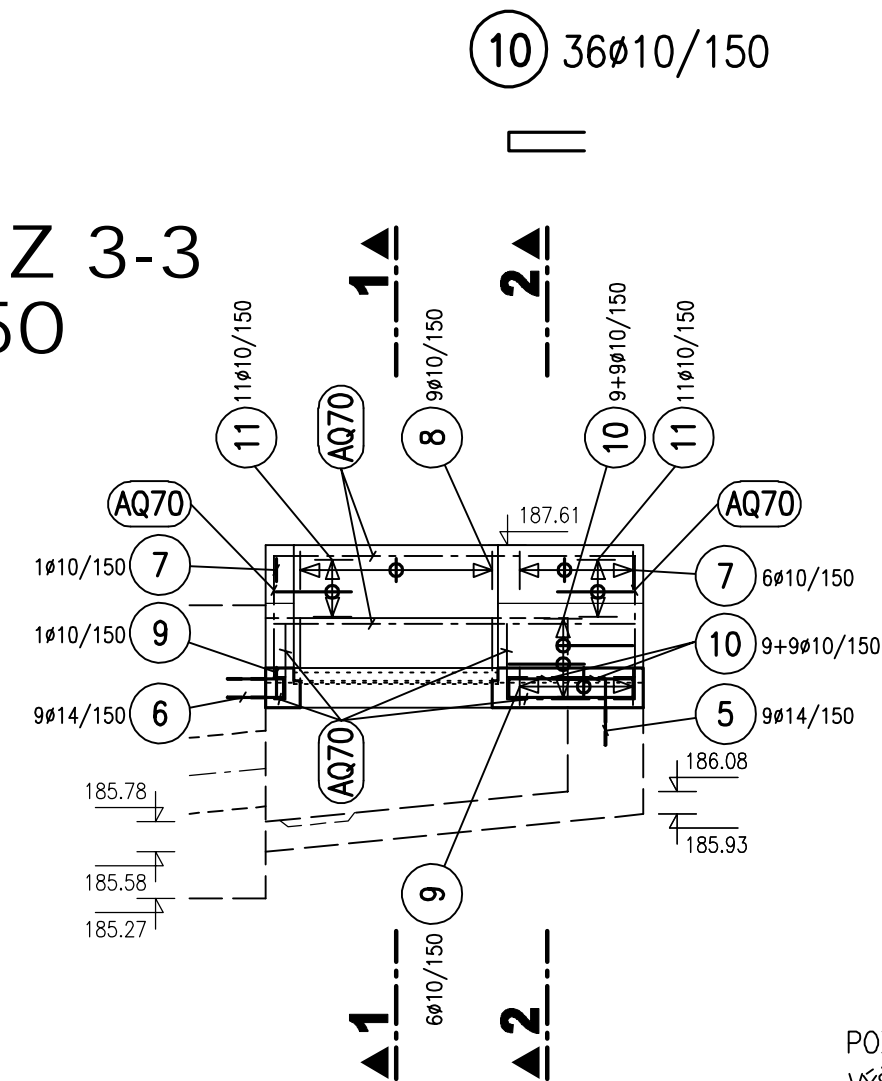
POZNÁMKA:

POL.1-6 VLEPOVANÉ KOTVY Z BETONÁŘSKÉ OCELI  
100ks Ø14, DL. 790-1370mm, ROZPON 150mm  
VRTY Ø18mm, DL. 250mm

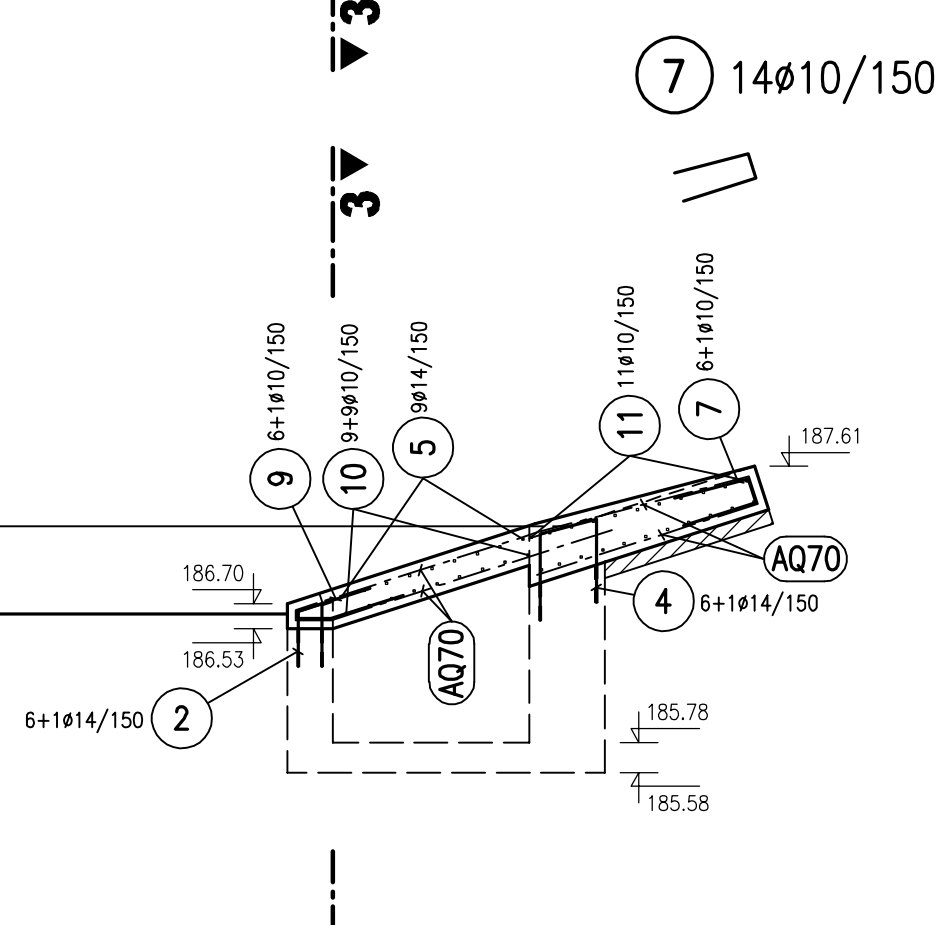
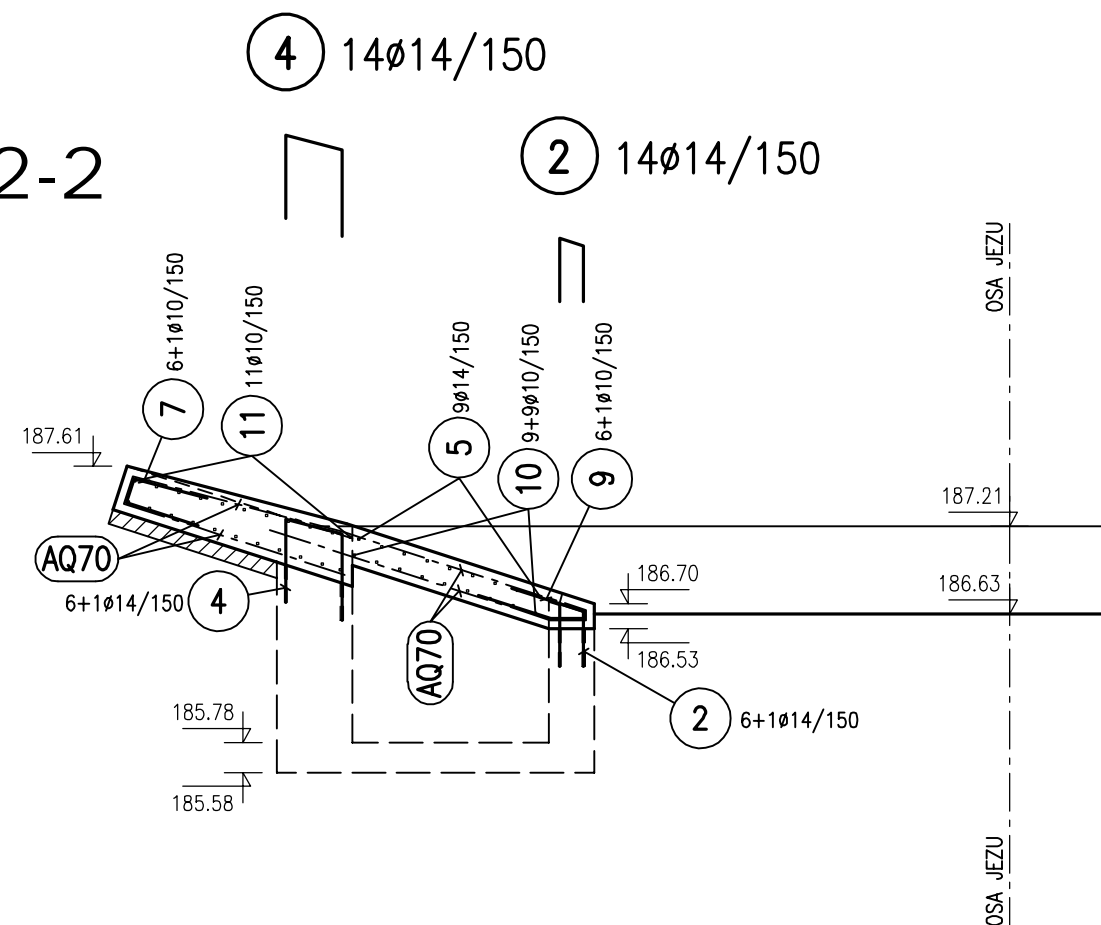
**ŘEZ 1-1**  
1:50



**ŘEZ 3-3**  
1:50



**ŘEZ 2-2**  
1:50



POZNÁMKY:  
VÝŠKOVÝ SYSTÉM : BPV  
KÓTOVÁNO V MM

